



CRW ADVISORY COUNCIL MEETING

November 17, 2023

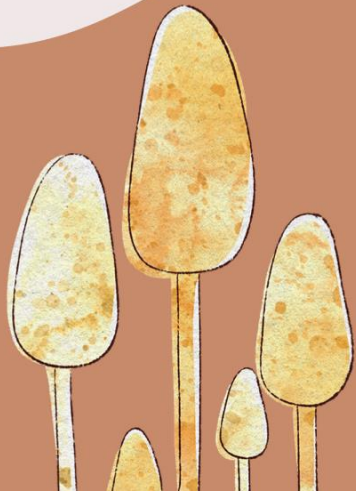
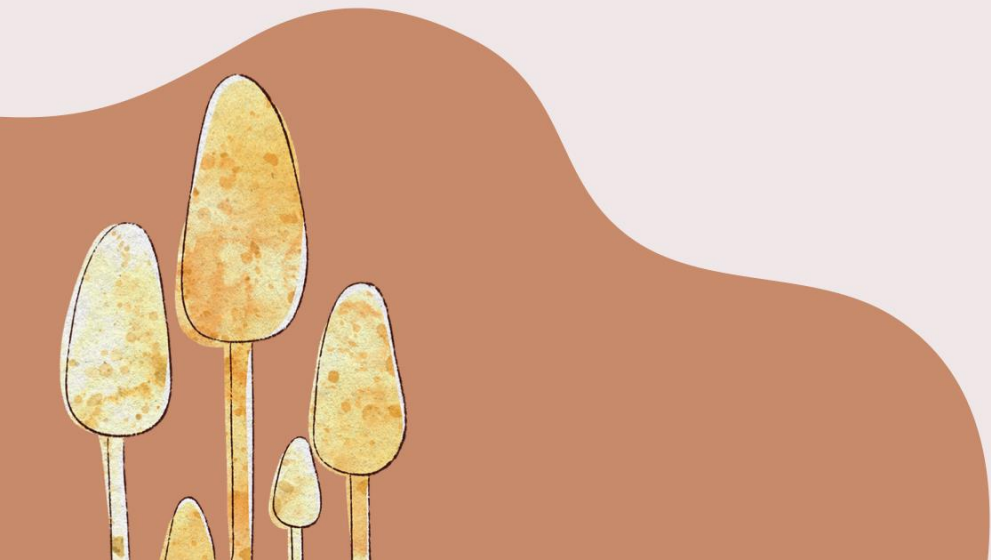


AGENDA



- Updates:
 - Business Administration
 - Facilities & Operations
 - Leadership & Programs
 - Well-Being & Fitness
 - Director
- 
- 

BUSINESS ADMINISTRATION



Financial Summary:

Total Revenue collected for the period of July to October amounts to \$3,063,108, comprising:

- Activity Fee: \$2,831,797
- SGR (Self-Generated Revenue): \$231,311

As of November 7, 2023, the SGR collection for the month of November is \$4,491, and the cumulative CRW (Campus Recreation and Wellness) SGR stands at \$235,802.

This means that CRW has achieved 50.05 % of its revenue goal.



**Student/Temp Employees:
Student/Temp Payroll for Pay Period 20 (PP20): \$45,945.50**

From July to October, the total student/temporary payroll expenses were \$347,997. This is 37.68% of the budgeted \$923,499.

The number of active students on payroll each month are as follows:

- May: 143
- June: 107
- July: 102
- August: 232
- September: 253
- October: 288
- November as of 11/6: 291



Professional Staff Payroll Year-to-Date (YTD):

From July to October
the total expenditure
on salaries and
benefits for
professional staff was
\$646,333 this is
31.82% of the
Budgeted Amount of
\$2,031,413.



SHRA	87,563.79
EHRA	\$ 371,931.07
	459,494.86
Benefits	186,838.14
	646,333.00

The background features a light beige color with several decorative elements: a large brown leaf in the top-left corner, a cluster of brown mushrooms in the bottom-left corner, a large brown wavy shape in the top-right corner, and a large brown wavy shape in the bottom-left corner. There are also several small brown leaves scattered on the right side and a few small brown diamonds in the bottom-right area.

FACILITIES & OPERATIONS



CRW THANKSGIVING HOURS

	ESRC	HSC
Wed, 11/22	5:30AM to 1:00PM	5:00AM to 1:00PM
Thurs, 11/23 & Fri, 11/24	CLOSED	CLOSED
Sat, 11/25	11:00AM to 6:00PM	CLOSED
Sun, 11/26	1:00PM to 11:00PM	CLOSED





CRW THANKSGIVING HOURS

	NRC	Blount
Wed, 11/22	Dawn to Dusk	Dawn to Dusk
Thurs, 11/23	CLOSED	Dawn to Dusk
Fri, 11/24	8:30AM to Dusk	Dawn to Dusk
Sat, 11/25	8:30AM to Dusk	Dawn to Dusk
Sun, 11/26	8:30AM to Dusk	Dawn to Dusk





CRW THANKSGIVING HOURS

	Indoor Pool
Wed, 11/22	5:30am-12pm
Thurs, 11/23	CLOSED
Fri, 11/24	CLOSED
Sat, 11/25	11am-1pm
Sun, 11/26	1pm-6pm



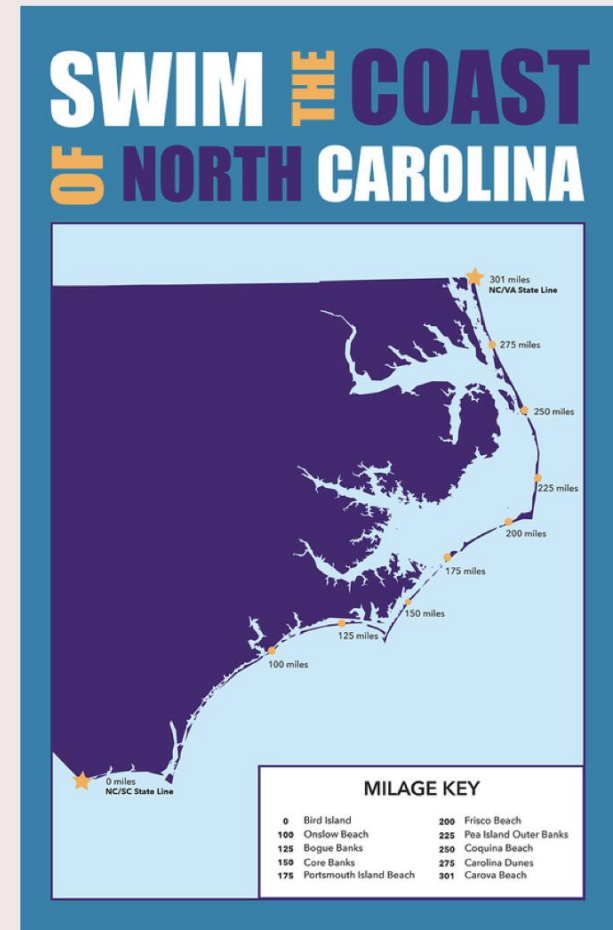


PROJECT UPDATES



SWIM THE COAST!

- We are in week 12 of the start of this challenge
- There is still time to sign up, it is going until end of Spring semester
- The person leading with the most mileage is at 85 miles and counting



POLAR BEAR PLUNGE REVEAL

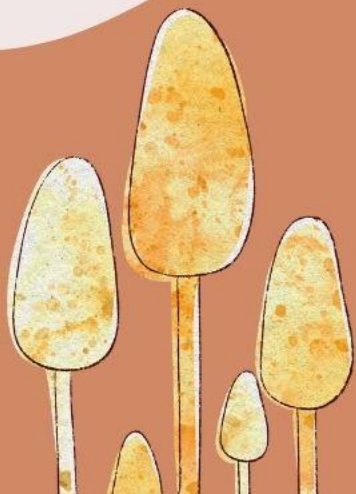
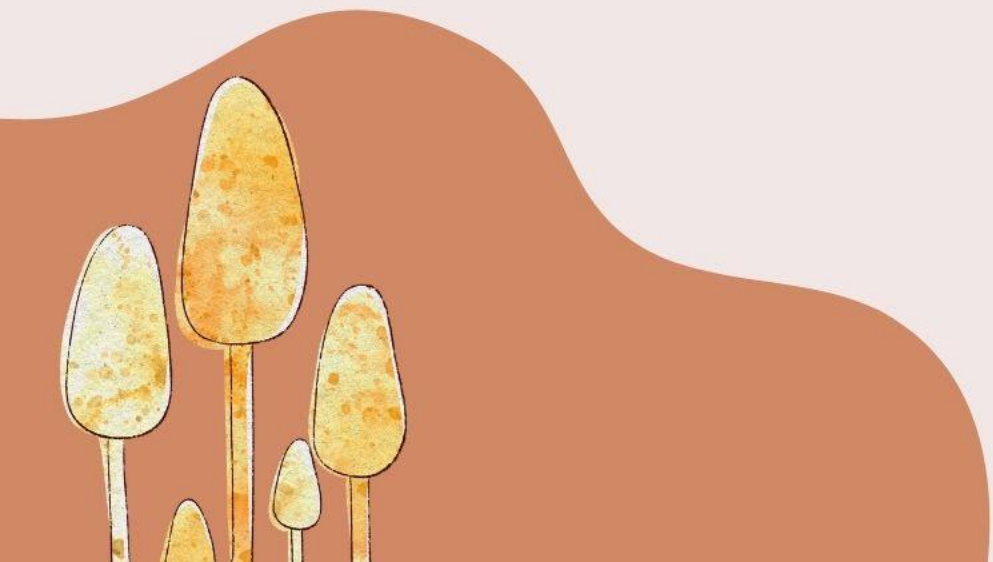
THURSDAY, JANUARY 18TH, 2024

6:00PM

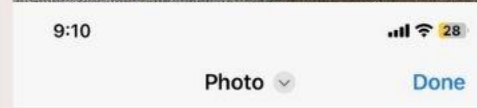
- ESRC Closing at 4:30PM
- Reopening at 5:30PM
- First Jump



LEADERSHIP & PROGRAMS



PROGRAMS PICTURES





ATHLETIC TRAINING



438 Treatments This Semester

156 Accident Report Follow Ups

102 Documented Injuries (Ankle Sprain #1)

JP Presented at NIRSA Region 2 Conference on AT in Campus Rec

Safety Officers Top Skills Learning: Communication,
Injury Recognition/Prevention, Organization/Time Mngt.





ADVENTURE



Camping and Climbing This Weekend
1907 Climbing Challenge

Zoo Day

Craven County Early College Low Ropes
High Ropes Course Staining Complete





SPORT PROGRAMS



Intramural Volleyball Season Going Strong – 40 Teams

Intramural Pickleball – 35 Teams

Trivia at Ballard Sounds Next Week

Haunted Hoops Recap

Home Events: WVB Tourney, Field Hockey, W. Lax, Equestrian

4 New HS Basketball Referees this Season

Chris Riddle: East/West Game Referee



WELL-BEING & FITNESS



The logo for Fit Expo 24 features the words "FIT EXPO" in a stylized, outlined font. The number "24" is positioned between the "E" and "P" of "EXPO". A large, dark purple, brush-stroke style "X" is drawn over the "24" and the "E" of "EXPO".

FIT EXPO 24

-
- Registration: 111 from 12 colleges/universities so far
 - Sponsors: \$22,000+ so far

A record breaking 113 presentation proposals were submitted.

Be on the lookout for
calendar invites to meet
the AD Fitness candidates

ESRC 238 UPGRADE

New Flooring

Unlimited Possibilities

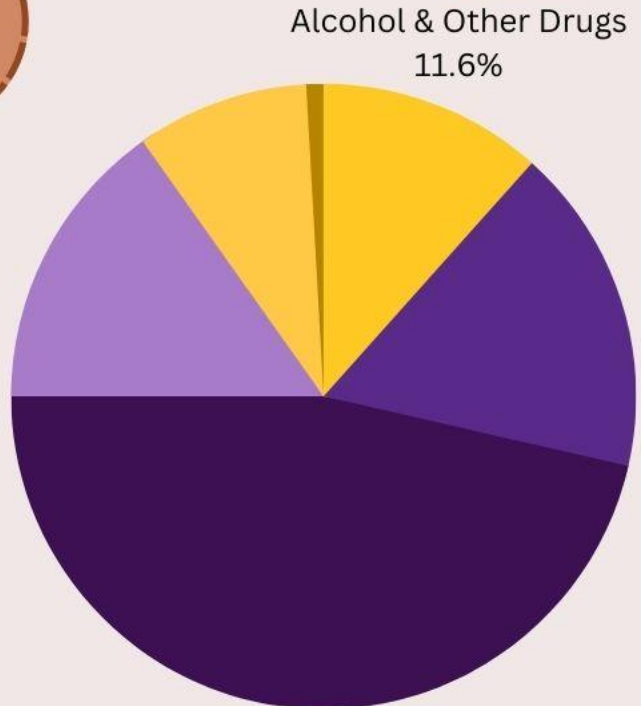




Q2 WORKSHOPS & EVENTS

**2,930
PARTICIPATION**

**112
OFFERINGS**



Overall Well-Being
15.2%

Mental Health & Stress Management
17%

Movement & Exercise
46.4%

Alcohol & Other Drugs
11.6%





QPR SUICIDE PREVENTION TRAINING

NOW 1HR- 1HR 30 MINS

CUSTOMIZABLE

23 MANDATORY SLIDES





WHAT HAPPENED WHEN THE FLU JOINED INSTAGRAM?

HSC-435

MCSC-398



HALLOWEEN SAFETY RECAP





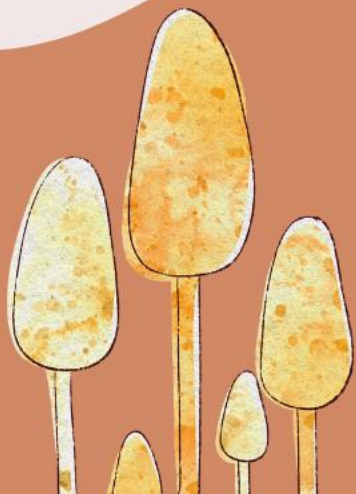
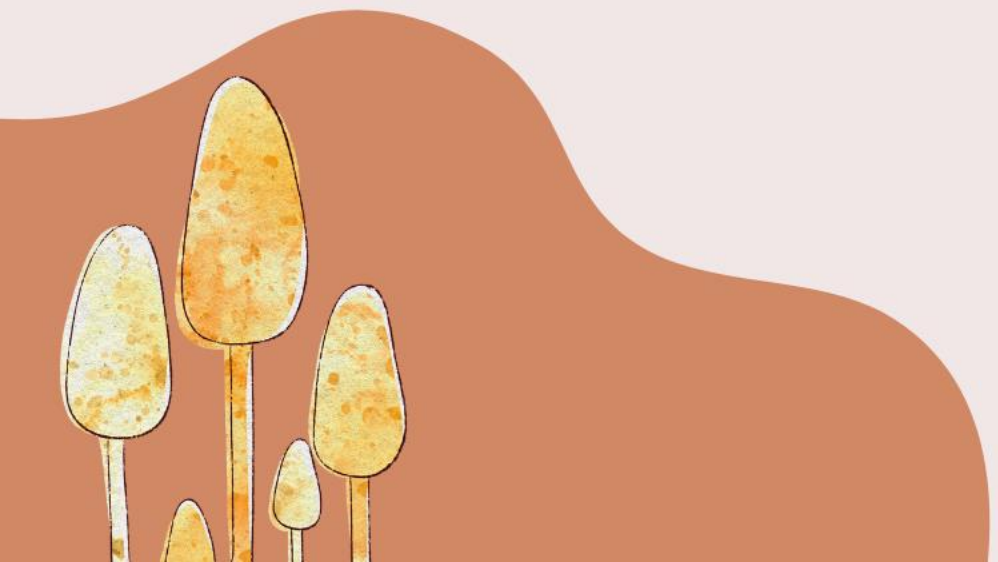
STUDY BREAKS

JESSE R. PEEL LGBTQ CENTER	DEC 5TH @ 11AM-2PM
LEDONIA WRIGHT CULTURAL CENTER	DEC 6TH @ 12PM-3PM
WOMEN AND GENDER OFFICE	DEC 7TH @ 11AM-2PM
CENTER FOR COUNSELING AND ST. DEVELOPMENT	TBD
LAUPUS LIBRARY	TBD
CAMPUS LIVING	TBD

ALL WELL-BEING HUB SHIFTS WILL BE STUDY BREAKS
DURING FINALS



WILLIE'S UPDATES



ALAN NIELSON



CRW Advisory Council
Interim Ex Officio – Spring 2024



JIMMY BUFFETT





PAPPA POLAR BEAR RETIRES



SENIOR GAMES - LOCAL CHAMPS



PITT COUNTY PROJECTS





SAFE



ATTENTION LADIES!

It's fall.

It's starting to get dark earlier.
Make sure you fill up your gas tank
before sunset.

Keep an extra charger with you at all times.

Signing up for AAA is a GREAT idea!

Check your tires and oil.

No ATM runs in the evening.

Park in well lit areas.

Only unlock your doors if you are *immediately*
getting out of your car.

Pay attention to your surroundings.

HEADS UP. PHONES DOWN.

Stay safe.





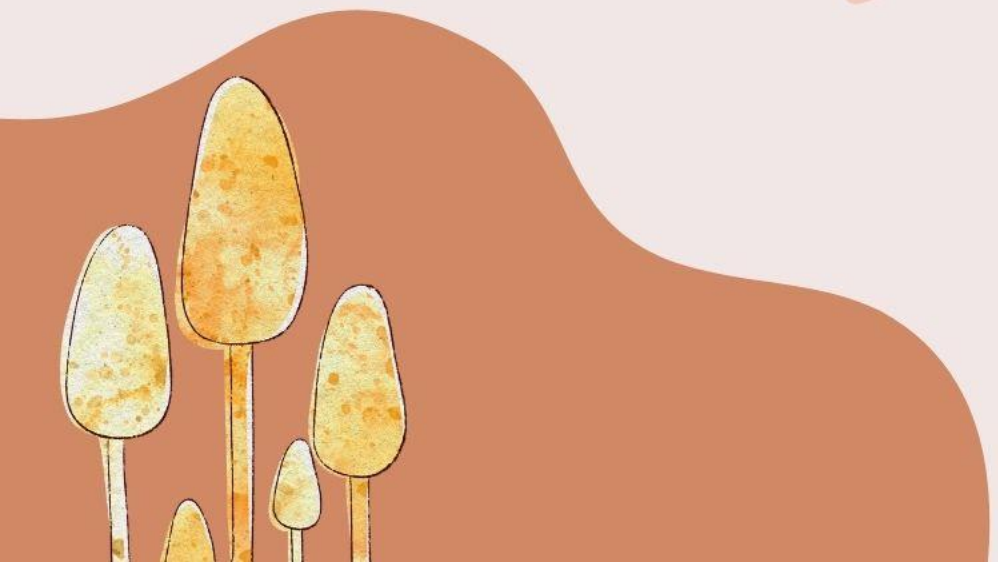
❄️ **CRW STAFF** ❄️
CELEBRATION

DEC 4, 2023

4:00PM - 6:00PM
ESRC STUDIO 239

HOT CHOCOLATE | APPLE CIDER | DESSERT BAR | SNACKS
SCANTRONS & BLUE BOOKLETS FOR FINALS

THANK YOU



Potential Meeting Dates for Next Semester

- Fridays from 9:00 AM – 10:30 AM
 - January 26
 - February 23
 - March 22
 - April 12